

# HALO

---

## CATHEXISVISION INTEGRATION GUIDE

**CathexisVision**<sup>®</sup>  
IP Video Management Solutions

**IPVideo**  
Corporation

IPVIDEO CORPORATION | 1490 NORTH CLINTON AVENUE BAY SHORE NY 11706

# Contents

- INTRODUCTION ..... 2**
- HALO SMART SENSOR – Motion MJPEG Output Stream URL ..... 2**
- HALO SMART SENSOR – Authentication ..... 3**
- HALO SMART SENSOR – Actions ..... 4**
- CATHEXISVISION ADMIN – SITE SETUP ..... 5**
- CATHEXISVISION ADMIN – ADD NEW CAMERA ..... 7**
- CATHEXISVISION CLIENT – LIVE MONITORING ..... 10**

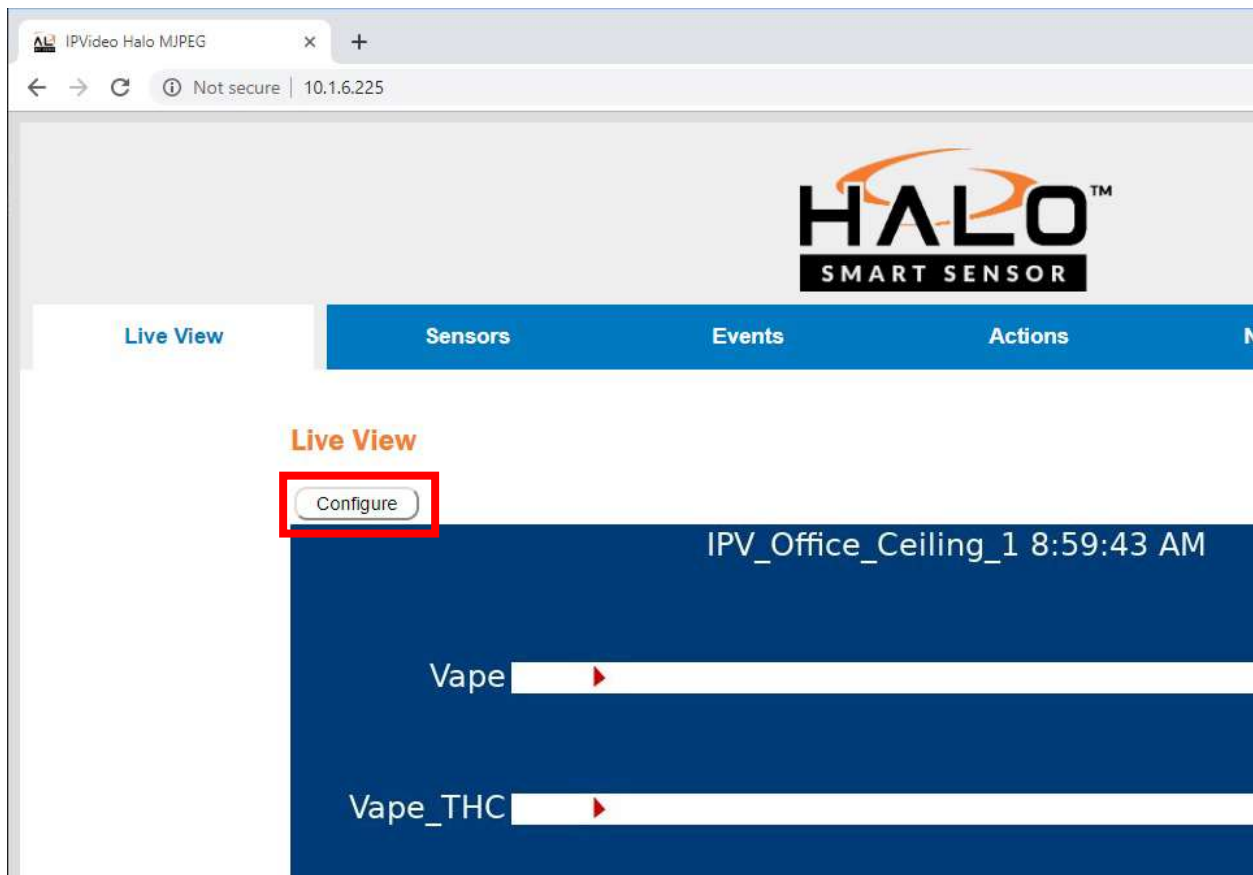
## INTRODUCTION

The HALO Smart Sensor can be integrated into Cathexisvision Video Management Software using the MJPEG output from the HALO device and the Generic URL support of Cathexisvision. This allows operators to visualize and record the real-time data from the HALO Smart Sensor, as though it were a typical IP Camera.

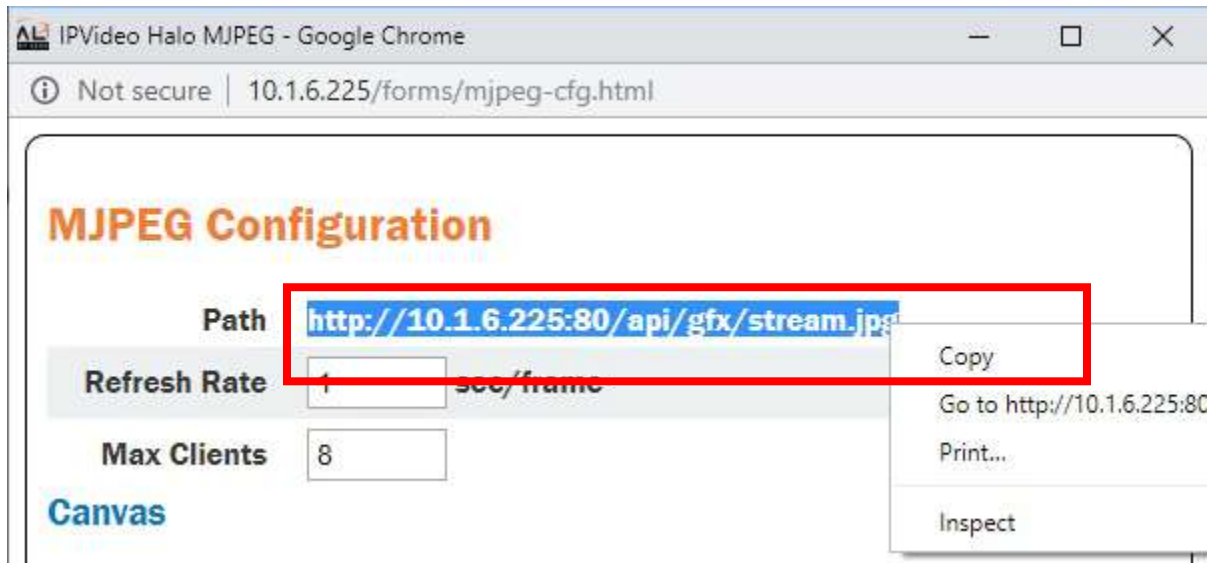
**Note : This integration was tested using version 2019 (191029-105653)**

### HALO SMART SENSOR – Motion MJPEG Output Stream URL

To capture the Stream URL needed to connect Video Insight to HALO, simply navigate to the HALO Smart Sensor with a Web Browser, and click on the **Configure** button.



Highlight the Stream URL that is displayed in the Configuration Pop Up window with the mouse and cursor, then right click and select Copy.



## HALO SMART SENSOR – Authentication

In order to connect HALO Smart Sensor to CORTROL VMS, the device must be set to Basic HTTP Authentication.

Open HALO Smart Sensor in a web browser and click on the Device tab.

Scroll down to HTTP / API and click on the Authentication dropdown menu and select Basic Only.

### HTTP / API

Port

Authentication

Click the **Save** button to save changes and re-boot the HALO Smart Sensor

## HALO SMART SENSOR – Actions

Click on the Actions tab of the HALO Smart Sensor interface.

**Actions**

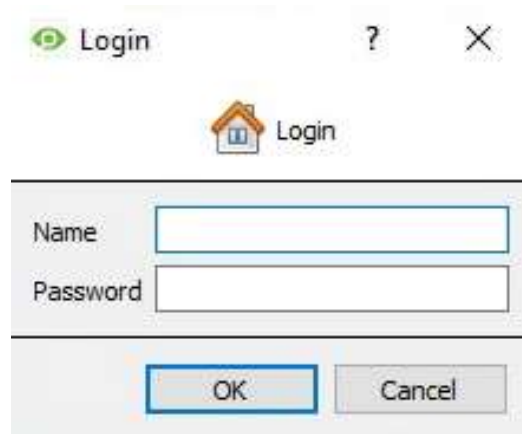
Event Identifier	Email Set	Email Reset	Messaging Set	Messaging Reset	Relay 1
Aggression	<input checked="" type="checkbox"/>	<input type="checkbox"/>	<input checked="" type="checkbox"/>	<input type="checkbox"/>	---
CO	<input checked="" type="checkbox"/>	<input type="checkbox"/>	<input checked="" type="checkbox"/>	<input type="checkbox"/>	---
CO2	<input type="checkbox"/>	<input type="checkbox"/>	<input checked="" type="checkbox"/>	<input type="checkbox"/>	---
Vandal	<input checked="" type="checkbox"/>	<input type="checkbox"/>	<input checked="" type="checkbox"/>	<input type="checkbox"/>	---
Vape	<input checked="" type="checkbox"/>	<input type="checkbox"/>	<input checked="" type="checkbox"/>	<input type="checkbox"/>	---
Vape_THC	<input checked="" type="checkbox"/>	<input type="checkbox"/>	<input checked="" type="checkbox"/>	<input type="checkbox"/>	---

Check the **Messaging Set** checkboxes for each of the **Event Identifiers**.

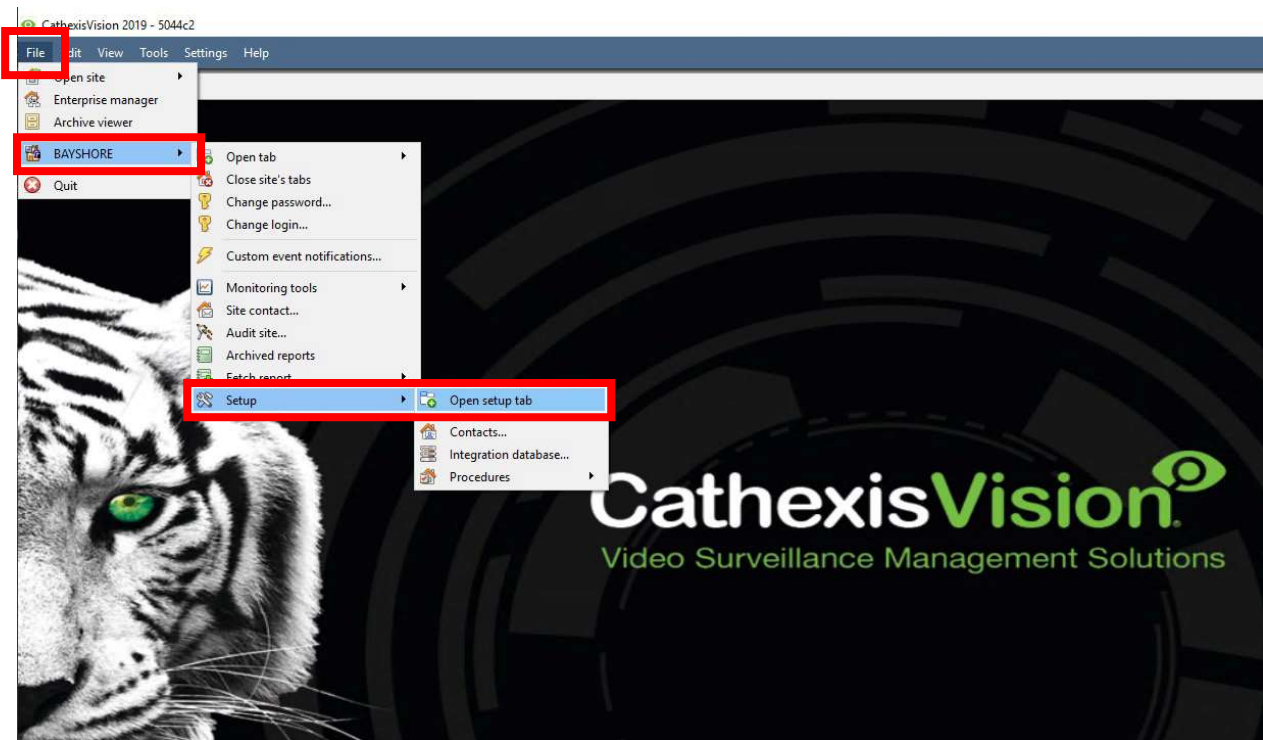
Click the **Save** button to save settings.

## CATHEXISVISION ADMIN – SITE SETUP

Login to the Cathexisvision Admin Client with Administrator rights to add the HALO Smart Sensor as a device.

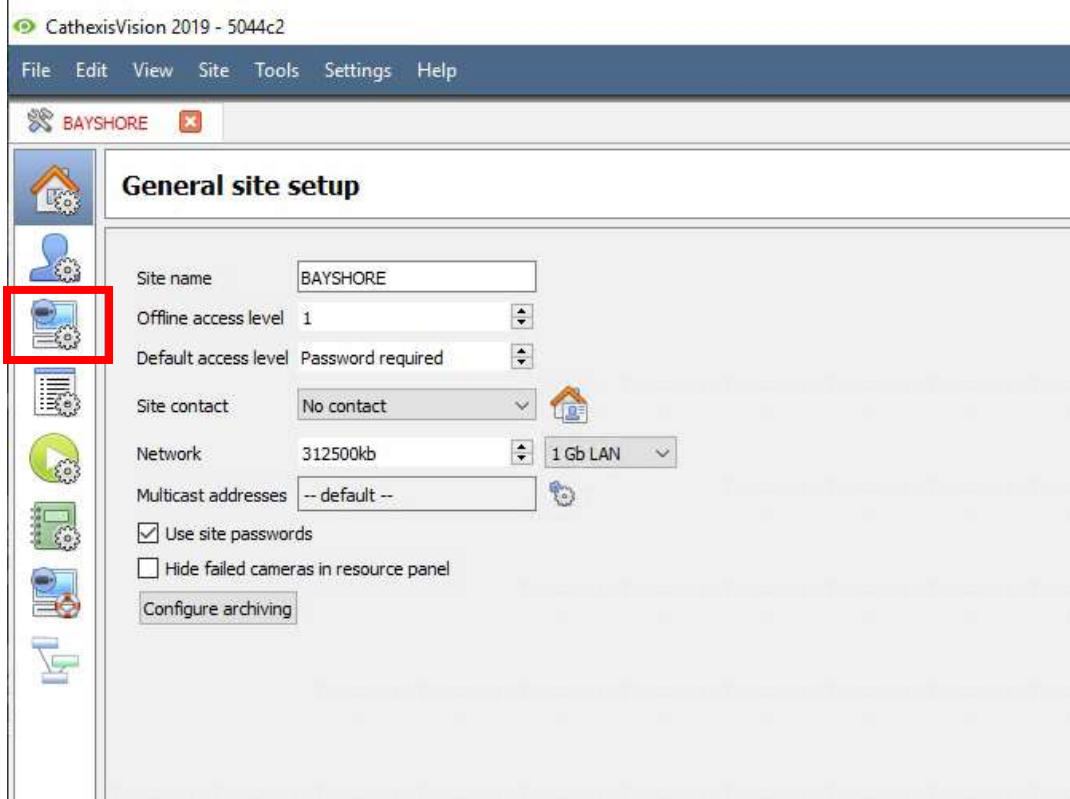


The image shows a standard Windows login dialog box. At the top, the title bar reads "Login" with a green eye icon on the left, a question mark, and a close button (X). Below the title bar is a small icon of a house with a padlock and the text "Login". The main area contains two text input fields: "Name" and "Password". At the bottom, there are two buttons: "OK" and "Cancel".

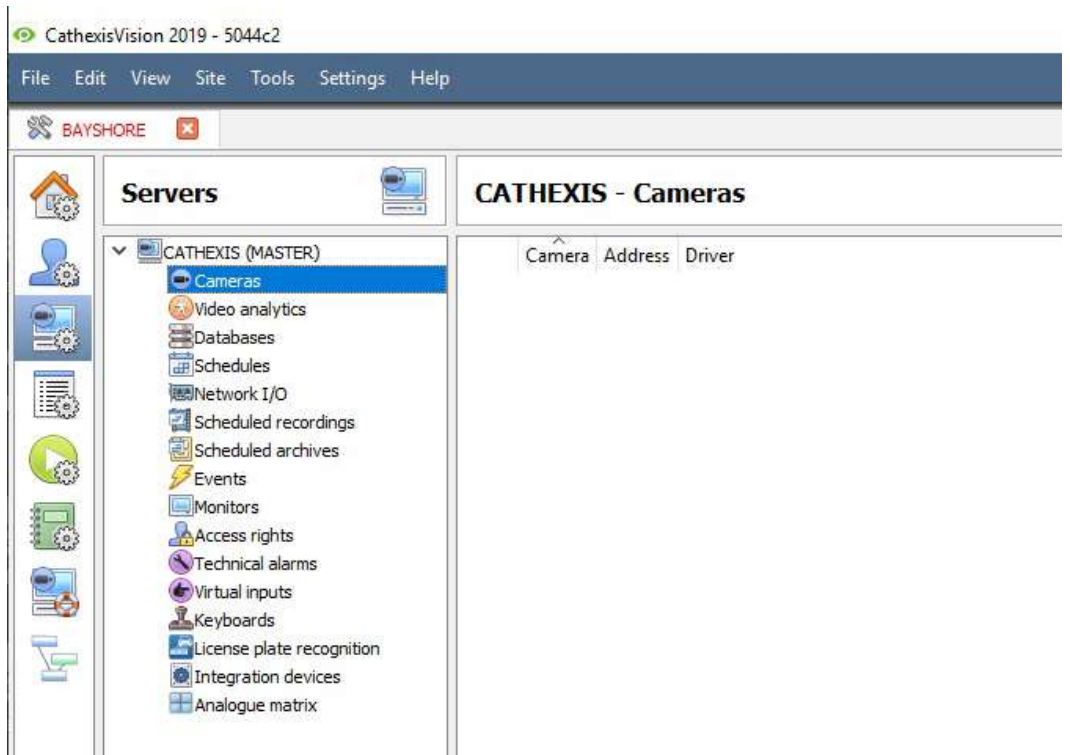


Click on File, select a Site, select Setup and Open Setup Tab.

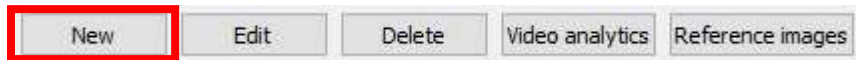
# CATHEXISVISION ADMIN – ADD NEW CAMERA



Click on the Configure Icon in the left navigation.








Click the New button to Add Device.

---

 New camera

**Camera connection**  
Specify the connection details for the camera

---

Driver	<input type="text" value="Generic Encoder"/>
Address	<input type="text" value="10.1.6.225:80/api/gfx/stream.jpg"/>
Login	<input type="text" value="admin"/>
Password	<input type="password" value="••••••"/>

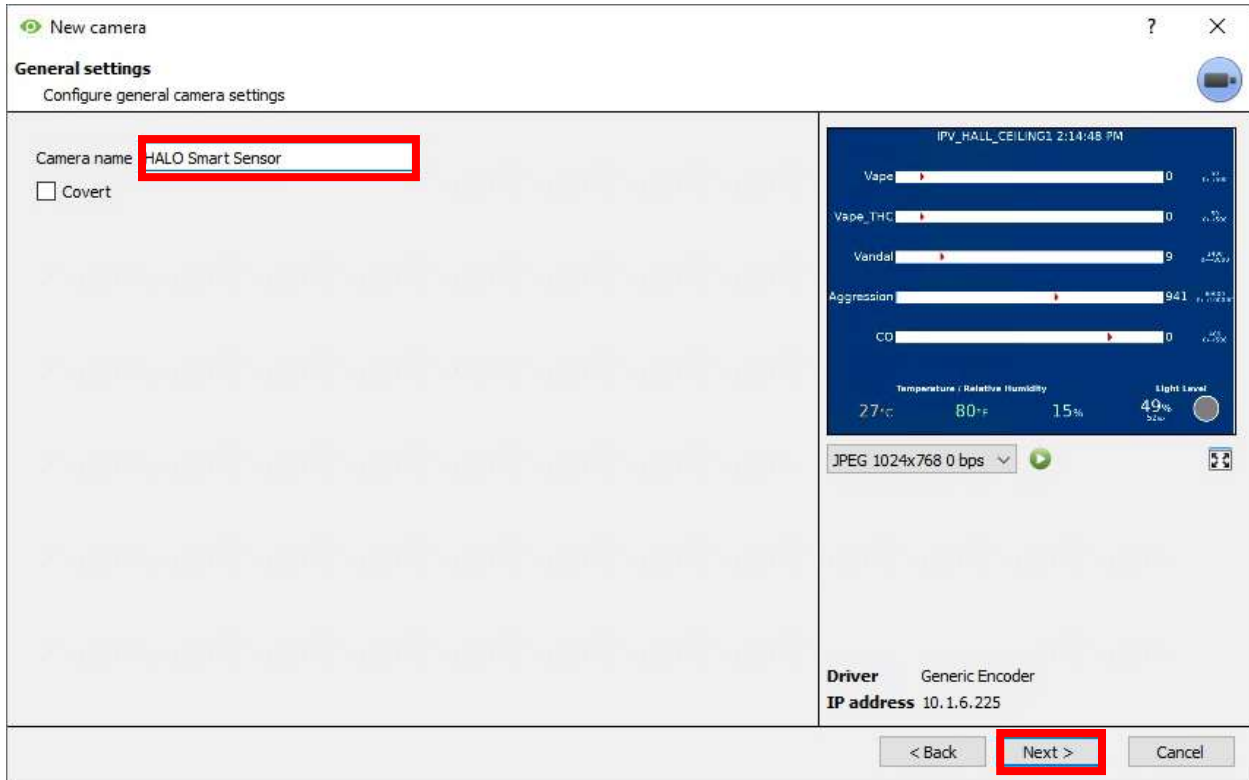
Select "**Generic Encoder**" for Driver

Paste the stream URL that was copied earlier from the HALO Smart Sensor interface into the Address bar (ex **http://ipaddress:80/api/gfx/stream.jpg**)

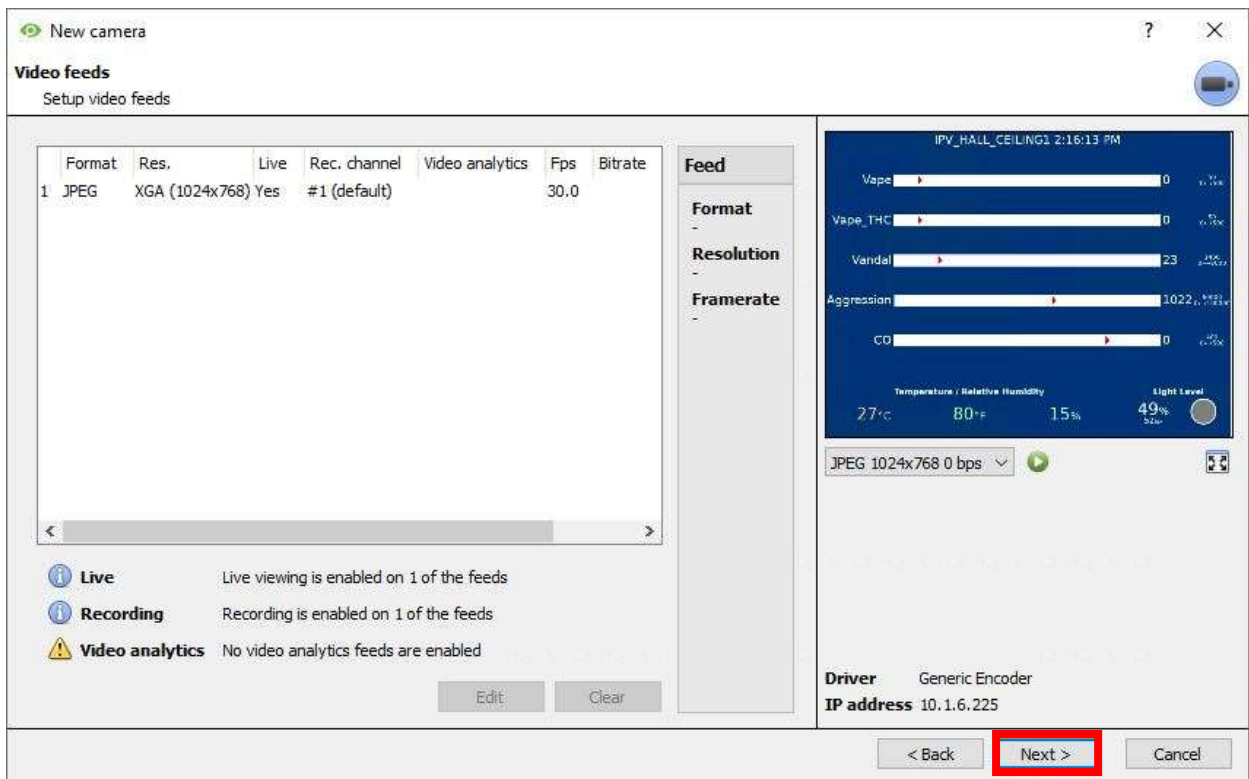
Enter the HALO device username in the **Login** field.

Enter the HALO device password in the **Password** field.

Click Next.



Enter a Camera name and click Next



Click next to save the device to the database.

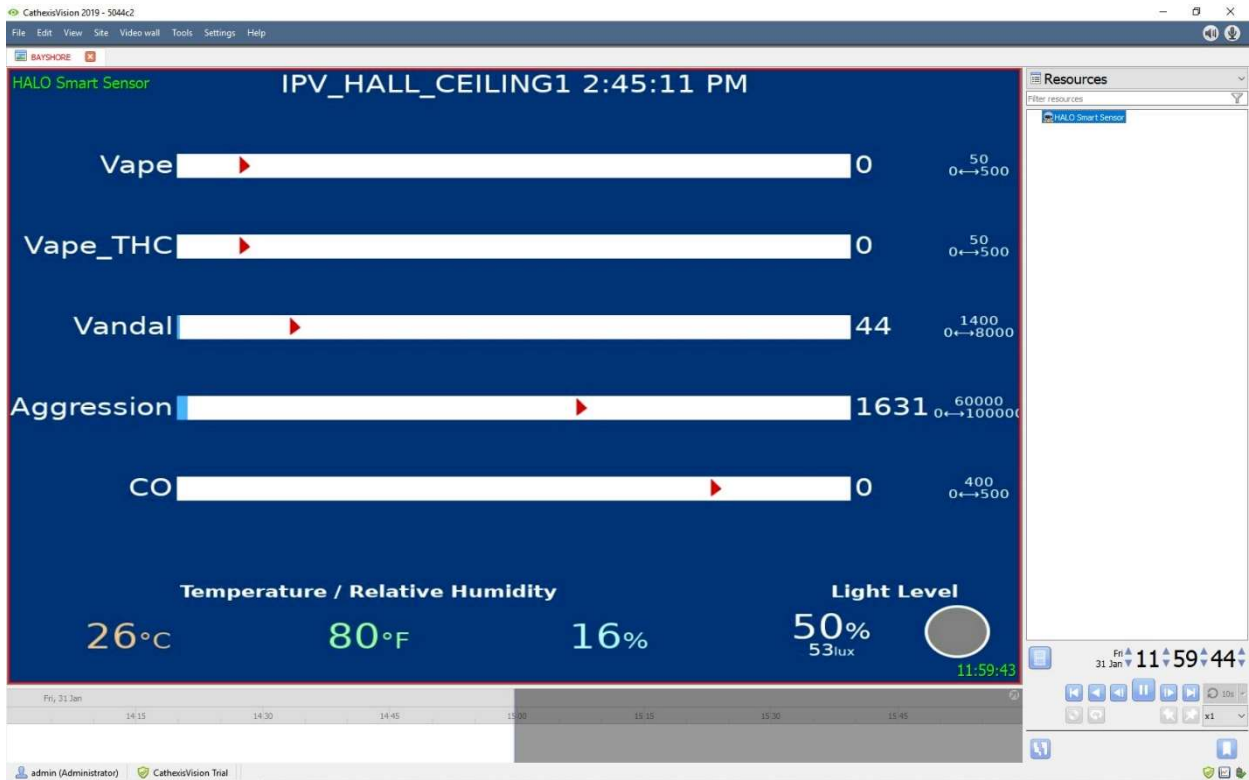
## CATHEXISVISION CLIENT – LIVE MONITORING

Open the CathexisVision Client and Login



Click on File, select Open Site





Drag the HALO Smart Sensor device from the Right navigation tree into the Viewing panel of the CathexisVision Client to visualize the live, real-time output from the HALO Smart Sensor.